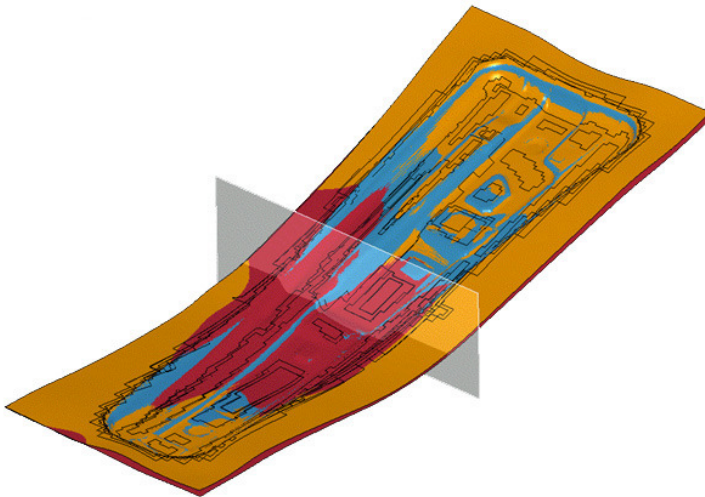


Press Release 2/2006

## The Group Research of Volkswagen AG is using LS-DYNA for Metal Forming Analysis

*Stuttgart, June 2006 –*



**Figure Volkswagen AG:** Complex deep drawing simulation

DYNAmore GmbH, the Distributor of LS-DYNA in Germany and some neighbouring countries is announcing, that with the Volkswagen AG another major car manufacturer will use their core product, the crash and metal forming simulation software package LS-DYNA developed by LSTC based in Livermore, USA.

LS-DYNA will be used by the Group Research of Volkswagen AG for the development and improvement of innovative production concepts. Dr. Kulp from Group Research of Volkswagen, who has chosen LS-DYNA after a number of detailed benchmark studies, says, that the decision for LS-DYNA was based on the following facts: „With LS-DYNA we use a software tool, that has

numerous advantages in the simulation of modern complex metal forming processes like the forming and spring back of high-strength steels or thermal deep drawing processes. Another application at Group Research of Volkswagen will be the determination of stamping forces in sheet metal forming. In particular, for this application we expect considerable progress and improvements for our processes. In general, LS-DYNA was selected since it provides a number of seamlessly integrated numerical methods in one executable, which allows comprehensive simulations of forming processes. “

Ulrich Franz, Managing Director of DYNAmore GmbH, states: „The decision of the Group Research of Volkswagen is a big success for us, as it strengthens our position at the Volkswagen Group, considerably. The basis of Volkswagen’s decision was the continuing competent technical work delivered by DYNAmore and the close and flexible cooperation between Volkswagen, DYNAmore and LSTC for the development of new features inside the LS-DYNA software package.”

Dr. John O. Hallquist, president of LSTC, adds: „Our close partnership with DYNAmore is the key for our joint success at Volkswagen. We are very delighted about the decision of the Group Research at Volkswagen and will put strong effort to support their applications. Our main competitive advantages like the flexible usage and the wide range of application capabilities of LS-DYNA from static to explicit time step integration methods and the superior performance and scalability on parallel hardware architectures helps us to increase our world-wide market share. The decision of Group Research of Volkswagen encourages us to proceed providing one code for multiple applications. “

Contact Address:

DYNA*more* GmbH

Industriestr. 2, D-70565 Stuttgart

Tel.: 07 11 - 45 96 00 – 0

Fax: 07 11 - 45 96 00 - 29

e-mail: [info@dynamore.de](mailto:info@dynamore.de)

Internet: [www.dynamore.de](http://www.dynamore.de)