

UPDATE

INVITATION – AGENDA

7th GERMAN LS-DYNA FORUM 2008

30th SEPTEMBER - 1st OCTOBER 2008

BAMBERG, GERMANY



Courtesy of Adam Opel GmbH

PREMIUM SPONSOR

SIEMENS

Siemens PLM Software

Dear customer,

with this „Update“ we kindly invite you again to attend the 7th LS-DYNA Forum. In this brochure please find small changes in the agenda. The conference is an ideal forum for LS-DYNA, LS-OPT and GENESIS users to share and discuss experiences, to obtain information on upcoming features and to learn more about new application areas. The conference will be accompanied by an exhibition featuring the latest software and hardware developments related to the software programs.

Yours sincerely

Ihre DYNAmore GmbH



ORGANIZATION

Venue

Welcome Kongress Hotel Bamberg
Mußstraße 7, D-96047 Bamberg, Germany
Phone +49 (0) 9 51 - 70 00 - 0
Fax +49 (0) 9 51 - 70 00 - 5 16
www.welcome-kongresshotel-bamberg.de

Accommodation

Please reserve the hotel room by yourself. Please use the keyword „DYNAmore Conference“ when you book your room, phone +49 (0) 9 51 - 70 00 - 0.

Registration fees

Industry participant: 520,- Euro / delegate
Academic (university employees): 360,- Euro / delegate
Fee includes: conference attendance, conference proceedings plus CD, gala dinner, lunches, coffee breaks, welcome reception on 29th September 2008.

Pre-Conference Seminars

Introduction to LS-DYNA

Lecturer Dr. T. Graf (DYNAmore GmbH)
Date/time 25th - 26th September 2008, 9:00am - 5:00pm
Language English
Location DYNAmore headquarters Stuttgart
Fee 740,- Euro / 640,- Euro for attendees of the 7th LS-DYNA Forum

Introduction to LS-DYNA - Advanced Topics

Lecturer Dr. A. Haufe (DYNAmore GmbH)
Date/time 29th September 2008, 9:00am - 5:00pm
Language English
Location DYNAmore headquarters Stuttgart
Fee 370,- Euro / 320,- Euro for attendees of the 7th LS-DYNA Forum

Hardware and software exhibition

Please request further information.

Conference language

German and English

Registration / Confirmation

Please use attached registration form or register online at <http://www.dynamore.de/forum.php>.

Contact

DYNAmore GmbH
Miriam Lang
Industriestr. 2
D-70565 Stuttgart, Germany
Phone +49 (0) 7 11 - 45 96 00 - 0
Fax +49 (0) 7 11 - 45 96 00 - 29
e-mail: info@dynamore.de

Please find more information

<http://www.dynamore.de>

All fees + VAT if applicable

Travel information

Car

West (from Frankfurt or Würzburg)
Motorway A3 towards Würzburg/Nürnberg until the exit Bamberg; Take the B 505 until exit Memmelsdorf/Scheßlitz, go left towards Bamberg, follow the Memmelsdorfer Straße approximately 5 km. after the first big bridge take a left towards „Konzert- und Kongresshalle“; after approximately 500 meters on the right side is the entrance to the hotel.

South (Munich or Nuremberg)

Motorway A9 until junction Nürnberg there take the A3 towards Würzburg until junction Fürth/Erlangen, then take the A73 towards Bamberg. Take exit Memmelsdorf/Gartenstadt; left towards Bamberg; follow the Memmelsdorfer Straße approximately 5 km. After the first big bridge take a left towards „Konzert- und Kongresshalle“ after approximately 500 meters on the right side is the entrance to the hotel.

East (Berlin or Bayreuth)

Motorway A9 until motorway junction Bayreuth-Kulmbach, then take the A70 towards Bamberg until exit Hallstadt; left towards Bamberg, at the fourth traffic light, (across from VAG dealer), right into the Magazinstraße; after the second big bridge left towards „Konzert- und Kongresshalle“, after approximately 500 meters on the right side is the entrance to the hotel.

North (Kassel or Schweinfurt)

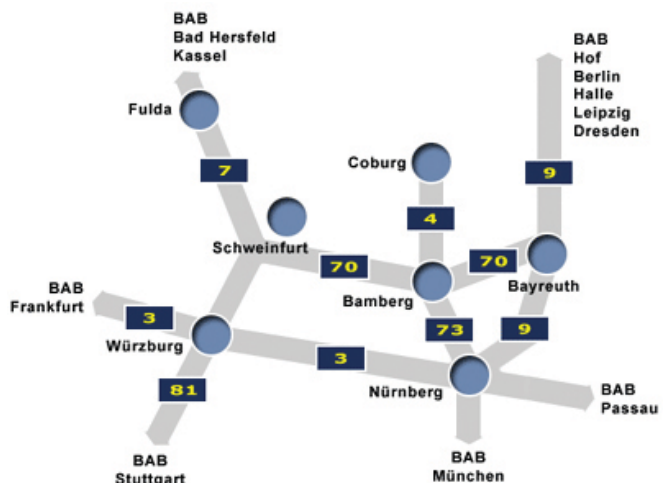
Motorway A7 until the exit Schweinfurt-Werneck, then on the A70 towards Bamberg until exit Hallstadt; right towards Bamberg, at the fourth traffic light, (across from VAG dealer), right onto the Magazinstraße; after the second big bridge left towards „Konzert- und Kongresshalle“ after approximately 500 meters on the right side is the entrance to the hotel.

Train

ICE station on route Berlin - Nuremberg - Munich

Plane

Airport Munich, Frankfurt, Nuremberg



Thursday, 25th September
- Friday, 26th September

Pre-Conference Seminar:
Introduction to LS-DYNA (in English)

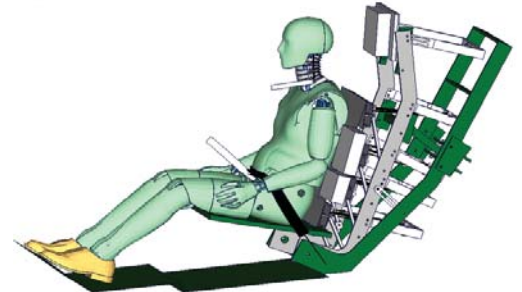
Monday, 29th September

Pre-Conference Seminar:
Introduction to LS-DYNA – Advanced Topics (in English)

Monday, 29th September

06:00pm - 09:00pm
from 08:00pm

Registration
Welcome reception



Tuesday, 30th September

from 08:00am

Registration

09:00 - 09:10am

Plenary

Welcome

09:10 - 10:15am

Plenary

Keynote Presentations

10:50 - 12:30am

Plenary

Keynote Presentations

12:30 - 01:50pm

Lunch

01:50 - 15:10pm

Parallel

Crash I
(Connections)

Metal
Forming I

Material I
(Plastics)

IT / CAE
Processes I

03:40 - 05:00pm

Parallel

Crash II
(Conn./Failure)

Metal
Forming II

Various
Applications

IT / CAE
Processes II

05:20 - 06:20pm

Parallel

Crash III
(Barriers)

Metal
Forming III

Material II
(Composites)

Workshop
Optimization

from 08:00pm

Gala dinner

Exhibition

Wednesday, 1st October

08:20 - 09:20am

Parallel

Validation /
Verification

Optimization I

Metal
Forming IV

09:50 - 10:50am

Parallel

Passive
Safety I

Optimization II

Material III
(Plastics)

Workshop
eta/DYNAform

11:20 - 12:20am

Parallel

Passive
Safety II

Optimization III

Forming to
Crash

Workshop
Primer

12:20 - 02:00pm

Lunch

02:00 - 03:10pm

Plenary

Keynote Presentations

03:30 - 04:45pm

Plenary

Keynote Presentations

04:45pm

Farewell

Exhibition

AGENDA – TUESDAY, 30th SEPTEMBER 2008

PLENARY

09:00 - 09:10am

WELCOME / KEYNOTE PRESENTATIONS

Welcome

U. Franz (DYNAmore GmbH)

09:10 - 09:45am

Recent Developments in LS-DYNA – I (E)

J. O. Hallquist (LSTC)

09:45 - 10:15am

Challenges in Technical Acoustics: What Can Be Computed Today? (D/E)

Prof. O. von Estorff (Universität Hamburg)

10:15 - 10:45am

Coffee break

10:50 - 11:00am

Digitale Simulation im Kontext des Produktlebenszyklus (D/E)

J. Philippeit (Siemens PLM Software)

11:00 - 11:30am

Advanced Methods for Safety Simulation in Vehicle Development (D/E)

S. Frik, B. Gosolits, R. Schirmer (Adam Opel GmbH)

11:30 - 12:00am

CAE-Prozessintegration und Optimierung in der Fahrzeugentwicklung bei Audi (D/E)

B. Mlekusch (Audi AG)

12:00 - 12:30am

Simulation of Sheet Metal Forming – Necessary Developments in the Future (D/E)

Prof. K. Roll (Daimler AG)

12:30 - 01:50pm

Lunch

PARALLEL

CRASH I – CONNECTIONS

01:50 - 02:10pm

Usage of Cohesive Elements in Crash Analysis of Large, Bonded Vehicle Structures – Experimental Tests and Simulation (D)

S. Marzi (IFAM Bremen); L. Ramon-Villalonga, M. Poklitar (Adam Opel GmbH); F. Kleiner (Henkel KGaA)

02:10 - 02:30pm

Simulation of Spot Welds and Welds Seams in Press-Hardened Steel (PHS) Assemblies

S. Klimek (Adam Opel GmbH)

02:30 - 02:50pm

Investigation of Spot Weld Behavior Using Detailed Modeling Technique (D)

F. Seeger, G. Michel, M. Blanquet (Daimler AG)

02:50 - 03:10pm

Kontinuumsmechanische Modellierung von Stahlblechklebverbindungen für die FE-Crashanalyse (D)

Prof. A. Matzenmiller, F. Burbulla (Universität Kassel)

03:10 - 03:40pm

Coffee break

PARALLEL

CRASH II – CONNECTIONS, FAILURE

03:40 - 04:00pm

Enhancement of Spot Weld Modeling using MAT_100_DA (D)

F. Seeger, M. Feucht (Daimler AG); G. Dumitru, T. Graf (DYNAmore GmbH)

04:00 - 04:20pm

Modelling of Bolts Under Dynamic Loads (D)

U. Sonnenschein (Daimler AG)

04:20 - 04:40pm

Fracture Prediction for Crashworthiness Assessment of Aluminum Bumper Systems (E)

C. Leppin, M. Kutscher, M. Feuerstein (Alcan Ltd.); G. Oberhofer (Matferm Partnerschaft Dr. Gese & Oberhofer)

04:40 - 05:00pm

Effiziente Ermittlung von Dehnraten- und Versagensparametern für die Fahrzeug-Crashsimulation mit LS-DYNA

J. Winkhofer, G. Trattinig, H. Schluder (Kompetenzzentrum – Das virtuelle Fahrzeug GmbH); B. Fellner (Magna Steyr AG & Co KG)

05:00 - 05:20pm

Break

PARALLEL

CRASH III – FAILURE, BARRIERS

05:20 - 05:40pm

A Study of the Gurson Damage Model and Numerical Simulation of Ductile Failure in LS-DYNA (E)

T. M. Fesich, D. Marzougui, P. Mohan, Prof. S. Kan (George Washington University / NHTSA)

05:40 - 06:00pm

A New Method to Model Aluminium Honeycomb Based Crash Barriers in Lateral and Frontal Crash Load Cases

T. Jost, T. Heubrandtner, C. Ruff (Kompetenzzentrum – Das virtuelle Fahrzeug GmbH); B. Fellner (Magna Steyr AG & Co. KG)

06:00 - 06:20pm

Development of an Impact Absorber for Roadside Barriers (E)

C. M. Vieira (ESTG – Leiria Polytechnic Institute); H. A. Almeida, I. S. Ferreira, J. O. Vasco, P. J. Bártolo, R. M. Ruben, S. P. Santos (INDEA Centre for Rapid and Sustainable Product Development)

from 08:00pm

GALA DINNER

METAL FORMING I

Springback Simulation with Complex Hardening Material Models (E)

L. Keßler, J. Gerlach, M.-S. Aydin (Thyssen Krupp Steel AG)

Considering Tool and Press Elasticity within the Forming Simulation and Experimental Validation (D)

B. Struck, M. Medrický, M. Düngen, S. Kulp (Volkswagen AG); Prof. B.-A. Behrens, R. Krimm (Universität Hannover)

Springback Compensation for Incremental Sheet Metal Forming Applications (E)

J. Zettler, H. Rezai (EADS Deutschland GmbH); Prof. G. Hirt (RWTH Aachen)

Numerical Modelling of Cross Roll Straightening (E)

A. Mutrux, B. Berisha, B. Hochholdinger, Prof. P. Hora (ETH Zürich)

METAL FORMING II

Superplastische Blechumformung von Magnesiumlegierungen (D)

J. Kappes, Prof. M. Liewald (Universität Stuttgart)

Praxisgerechte Biegesimulation als Vorformoperation für den IHU-Prozess (D)

T. Bach (SimuForm GmbH)

New Features in eta/DYNAFORM 5.7 (E)

J. He (Engineering Technology Associates, Inc.)

Recent Advances and New Developments in Hot Forming Simulation with LS-DYNA (D)

D. Lorenz, A. Haufe (DYNAmore GmbH)

METAL FORMING III

Prediction of Cutting Forces in Metal Cutting, Using the Finite Element Method, a Lagrangian Approach (E)

M. F. Villumsen (Aalborg University); T. G. Fauerholdt (Bang & Olufsen)

Simulation of Metal Cutting Using Smooth Particle Hydrodynamics (E)

M. F. Villumsen (Aalborg University); T. G. Fauerholdt (Bang & Olufsen)

Simulation of Metal Forming Processes Under Consideration of Imprecise Probabilities (D)

S. Pannier, Prof. W. Graf (TU Dresden); H. Müllerschön, M. Liebscher (DYNAmore GmbH)

D/E = Simultaneous translation
German - English

HARDWARE AND SOFTWARE EXHIBITORS

4a engineering GmbH	Fraunhofer Institut SCAI	Microsoft GmbH
Altair Engineering GmbH	GNS Systems GmbH	MSC.Software GmbH
Arup	GNS mbH	NAFEMS GmbH
Carhs GmbH	Hewlett Packard GmbH	NEC Deutschland GmbH
DYNAmore GmbH	IBM Deutschland GmbH	Siemens PLM Software
Engineous Software GmbH	Inprosim GmbH	SimuForm GmbH
EnginSoft SpA	Intel GmbH	T-Systems Enterprise Services GmbH
ESI GmbH	JRI Solutions Ltd.	Tecosim GmbH
FE-Design GmbH	Lasso Ingenieurgesellschaft mbH	transtec ag

MATERIAL I – PLASTICS

Validation and Verification of Plastics under Multiaxial Loading (D)

A. Rataj, Prof. S. Kolling (FH Gießen); A. Haufe (DYNAmore GmbH); M. Feucht (Daimler AG); P. Du Bois (Consultant)

Characterization of Polyolefins for Design Under Impact: From True Stress/ Local Strain Measurements to the FE-Simulation with LS-DYNA Mat. SAMP-1 (E)

M. Nutini, M. Vitali (Basell Poliolefine Italia S.r.l.)

Kurzfaserverstärkte Kunststoffbauteile – Einfluss der prozessbedingten Faserorientierung auf die Strukturmechanik (D)

P. Reithofer, M. Fritz, T. Wimmer (4a engineering GmbH)

Modelling and Crash Simulation of Long-Fibre-Reinforced Thermoplastics (E)

T. Seelig (Fraunhofer IWM); A. Latz (Fraunhofer ITWM); S. Sanwald (Fraunhofer ICT)

VARIOUS APPLICATIONS

Durability Analysis of the Door with Simulation of the Door Endurance Test with LS-DYNA and FEMFAT (D)

B. Kopp, H. Pfitzer (Daimler AG)

Structural Dynamic Response of a Track Chain Complete Undercarriage System Using a Virtual Proving Ground Approach (E)

M. Perillo, V. Primavera, G. Bonello (EnginSoft SpA); M. Cavedoni (Italtractor ITM Spa)

Simulation of Rotor-Blade for the Current Generation System Using FSI Capability in LS-DYNA (E)

Ju. Kim, Jo. Kim (Oceanspace Inc.)

MATERIAL II – COMPOSITES

Untersuchungen zur Modellierung von Strukturen aus FKV unter Crashbelastung mit Hilfe von Mehrschalenmodellierungen (D)

M. Holzapfel, G. Kopp (Deutsches Zentrum für Luft- und Raumfahrt); P. Adamski, H. Eisenhans (Dr. Ing. h.c. F. Porsche AG); T. Hambrecht, J. Döll (Audi AG)

Simulation of Low Velocity Impact on Composite Plates with Compressive Preload (E)

S. Heimbs, P. Middendorf (EADS GmbH); S. Heller (Universität Karlsruhe)

Simulation des Impaktverhaltens von CFK-Sandwichpanels unter Vorlast (D)

J. Weiße, F. Hähnel, A. Hauffe, Prof. K. Wolf (TU Dresden)

IT / CAE PROCESSES I

Handling of Complex Kinematics of a Crash Model in ANSA (E)

L. Rorris (Beta CAE Systems S.A.)

Mature Concepts Through Integrated CAD and CAE Processes in Catia V5 with LS-DYNA (E)

H. Doepner, U. Jankowski, M. Sans (Tecosim GmbH); M. Nelsen, I. Phillips (Force Five AG)

HyperCrash – a Highly-Tuned Modeling Environment for Crash Analysis and Safety Evaluation in the HyperWorks Simulation Framework(E)

C. Alscher, G. Resta (Altair Engineering GmbH)

Visual-Environment

Integrated Pre and Post Environment for LS-DYNA
S. H. Shetty, V. Ganesan, S. C. Sivalingam, M. Sommer (ESI Group)

IT / CAE PROCESSES II

Eine CAE Infrastruktur für LS-DYNA unter Verwendung von Microsoft Windows HPC Server 2008 (D)

T. Groß, J. Martini (GNS Systems GmbH)

CAE Berechnungen im Jahre 2008, ein Zwischenbericht

A. Bömelburg (IBM Deutschland GmbH)

Shorten Development Processes Through Efficient Data Management

J. Philippeit, Z. Petrovic (Siemens PLM Software)

Challenges in High Performance Computing (E)

O. Tennert (transtec ag)

WORKSHOP – OPTIMIZATION

Getting Started with LS-OPT and D-SPEX

cont'd

cont'd

PARALLEL

01:50 - 02:10pm

02:10 - 02:30pm

02:30 - 02:50pm

02:50 - 03:10pm

03:10 - 03:40pm

PARALLEL

03:40 - 04:00pm

04:00 - 04:20pm

04:20 - 04:40pm

04:40 - 05:00pm

05:00 - 05:20pm

PARALLEL

05:20 - 05:40pm

05:40 - 06:00pm

06:00 - 06:20pm

AGENDA – WEDNESDAY, 1ST OCTOBER 2008

PARALLEL	VALIDATION / VERIFICATION	OPTIMIZATION I
08:20 - 08:40am	Modeling Techniques for Predictive and Robust Dummy Models – Comparison with Validation and Verification Considerations in Other Applications (D) <u>U. Franz</u> , S. Stahlschmidt, O. Graf (DYNAmore GmbH)	Structural Health Monitoring Under Consideration of Uncertain Data (D) <u>C. Jenkel</u> , Prof. W. Graf, J.-U. Sickert (TU Dresden)
08:40 - 09:00am	Ideas on Applying Very Fine Models in Dummy Model Development (D) A. Gromer, J. Zscheschack, U. Franz (DYNAmore GmbH); M. Walz (Mercedes Car Group, Daimler AG)	Global Sensitivity Analysis in View of Nonlinear Structural Behavior (D) <u>U. Reuter</u> (TU Dresden); M. Liebscher (DYNAmore GmbH)
09:00 - 09:20am	Is Your Mesh Refined Enough? Estimating Discretization Error Using GCI (E) L. Schwer (Schwer Engineering & Consulting Services)	4a Impetus – Neue Wege in der Materialcharakterisierung für die dynamische Simulation am Beispiel eines Schaumwerkstoffes (D) <u>P. Reithofer</u> , M. Fritz (4a engineering GmbH); K. Witowski, O. Graf (DYNAmore GmbH)
09:20 - 09:50am	Coffee break	
PARALLEL	PASSIVE SAFETY I	OPTIMIZATION II
09:50 - 10:10am	The Use of LS-DYNA Implicit for Seat Comfort Assessment – H-Point Prediction Using SAE J826 Dummy and Pressure Mapping (E) <u>T. Zeguer</u> , B. Feng, D. Coleman (Jaguar Cars and Land Rover)	New Developments in LS-OPT (E) <u>N. Stander</u> , T. Goel, W. J. Roux (LSTC)
10:10 - 10:30am	Automating and Extending Oasys PRIMER and Oasys D3PLOT Using JavaScript (E) M. Thornton (Arup)	Optimization of a Crash Management System Considering Multiple Load Cases Using ANSA and LS-OPT (D) M. Feuerstein (Alcan Singen GmbH); <u>K. Witowski</u> , H. Müllerschön (DYNAmore GmbH)
10:30 - 10:50am	WorldSID Dummy Model Development in Cooperation with German Automotive Industry (D) <u>A. Gromer</u> , S. Stahlschmidt (DYNAmore GmbH); P. Schuster (Dr. Ing. h.c. F. Porsche AG)	Automating and Organizing the Optimization Process Using ANSA – LS-OPT – META. A Bumper Optimization Case Study (E) G. Korbetis (Beta CAE Systems S.A.)
10:50 - 11:20am	Coffee break	
PARALLEL	PASSIVE SAFETY II	OPTIMIZATION III
11:20 - 11:40am	Development of Simulation Based Side Airbag Algorithm (E) <u>C.-H. Lin</u> (General Motors Corp.); P. Erb, T. Kiefer, S. Frik (Adam Opel GmbH)	SuperLIGHT-CAR – die Multi-Material-Karosserie (D) <u>M. Lesemann</u> , C. Sahr (IKA – RWTH Aachen)
11:40 - 12:00am	Gas Dynamic Simulation for Curtain Airbag Deployment through Interior Trims (E) <u>T. Zeguer</u> , B. Feng, D. Coleman (Jaguar Cars and Land Rover)	Topology Optimization Based on Graph Theory of Crash Loaded Flight Passenger Seats (E) <u>Prof. A. Schumacher</u> , C. Olschinka, B. Hoffmann (HAW Hamburg)
12:00 - 12:20am	Enhancements in FTSS Dummy Model Development and Outlook (E) J. Rasico (FTSS, Inc.)	Efficient Topology, Topometry and Sizing Optimisation for LS-DYNA Analysis Problems – Coupling LS-DYNA to VR&D GENESIS (E) <u>M. Gambling</u> , D. Salway (GRM Consulting Ltd.)
12:20 - 02:00pm	Lunch	
PLENARY	KEYNOTE PRESENTATIONS	
02:00 - 02:30pm	Ship Safety and LS-DYNA, Some Application Examples L. Zhang (Germanischer Lloyd AG)	
02:30 - 03:00pm	Auslegung von Rückhaltesystemen <u>K. Elsässer</u> , A. Ruf, S. Gargallo, L. Kübler (TRW GmbH)	
03:00 - 03:10pm	New Developments in Processor and Cluster Technology for CAE Applications (E) U. Becker-Lemgau (Intel GmbH)	
03:10 - 03:30pm	Coffee break	
03:30 - 04:00pm	Prozessoptimierung aus der Sicht eines Entwicklungsdienstleisters <u>M. Hog</u> , A. Benninger, P.-E. Munch (EDAG GmbH)	
04:00 - 04:45pm	Recent Developments in LS-DYNA – II (E) J. Hallquist (LSTC)	
04:45pm	Farewell T. Münz (DYNAmore GmbH)	

Final program could be subject to alterations.
(E) = Presentation in English language.
(D) = Presentation in German language.

METAL FORMING IV

PARALLEL

LS-PREPOST Stamping Application Setup (E)
Q. Yan (LSTC)

08:20 - 08:40am

cont'd

08:40 - 09:00am

Concepts to Consider Tool Elasticity in Forming Simulations with LS-DYNAJ. Raquet, S. Mandel, D. Lorenz, A. Haufe (DYNAmore GmbH);
Prof. K. Roll, P. Bogon (Daimler AG)

09:00 - 09:20am

09:20 - 09:50am

MATERIAL III – PLASTICS**Numerical Analysis of Metallic Hollow Sphere Structures (E)**

M. Vesenjak, Prof. Z. Ren (University of Maribor); T. Fiedler (University of Newcastle); Prof. A. Öchsner (Technical University of Malaysia)

Determination of the Behaviour of Thermoplastics at High Strain-Rates Using the Invariant Theory

F. Becker, A. Kraatz, J. Wieser (DKI – Deutsches Kunststoff-Institut)

Kunststoffedern unter Langzeitbelastung**– Anwendung viskoelastischer Materialmodelle (D)**T. Wimmer, M. Fritz (4a engineering GmbH);
W. Bretis (Spirello Schlaflsysteme GmbH)**WORKSHOP – eta/DYNAform**

PARALLEL

Applications and New Developments in eta/DYNAform

09:50 - 10:10am

cont'd

10:10 - 10:30am

cont'd

10:30 - 10:50am

10:50 - 11:20am

FORMING TO CRASH**On Calibrating Advanced Damage Models Using Sheet Metal Coupon Tests (D)**H. Ebelsheiser (HAW Hamburg);
M. Feucht, F. Neukamm (Daimler AG)**Consistent Damage Modelling in the Process Chain of Forming to Crashworthiness Simulations (E)**

F. Neukamm, M. Feucht (Daimler AG); A. Haufe (DYNAmore GmbH)

Quicker Process to Consider Strain Hardening for Crash Analysis Using HYCRASH (E)

S. Endoh, T. Miyachi, Y. Umezumi (JRI Solutions, Ltd.)

WORKSHOP – PRIMER

PARALLEL

Applications and New Developments in PRIMER

11:20 - 11:40am

cont'd

11:40 - 12:00am

cont'd

12:00 - 12:20am



Hardware and Software Exhibition



DYNAmore GmbH — Gesellschaft für FEM-Ingenieurdienstleistungen

Headquarters

DYNAmore GmbH
Industriestr. 2
D-70565 Stuttgart
Tel. +49 (0) 7 11 - 45 96 00 - 0
Fax +49 (0) 7 11 - 45 96 00 - 29
e-mail: info@dynamore.de

Office North

DYNAmore GmbH
Im Balken 1
D-29364 Langlingen
Tel. +49 (0) 50 82 - 9 14 00 - 51
Fax +49 (0) 50 82 - 9 14 00 - 49

Office Ingolstadt

DYNAmore GmbH
Donaustr. 7
D-85049 Ingolstadt
Tel. +49 (0) 8 41 - 12 60 48 - 34
Fax +49 (0) 8 41 - 12 60 48 - 38

Offices on site

Daimler AG, Sindelfingen
Telefon +49 (0) 70 31 - 81 31 91
Daimler AG, Untertürkheim
Telefon +49 (0) 7 11 - 45 96 00 - 20

www.dynamore.de

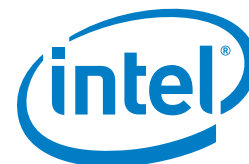
SPONSORS

Premium Sponsor



Siemens PLM Software, a business unit of the Siemens Industry Automation Division, is a leading global provider of product lifecycle management (PLM) software and services with 5.5 million licensed seats and 51,000 customers worldwide. Headquartered in Plano, Texas, Siemens PLM Software's open enterprise solutions enable a world where organizations and their partners collaborate through Global Innovation Networks to deliver world-class products and services. For more information on Siemens PLM Software products and services, visit www.siemens.com/plm.

Gold Sponsors



Silver Sponsors

